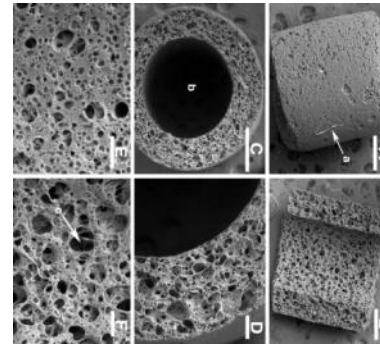


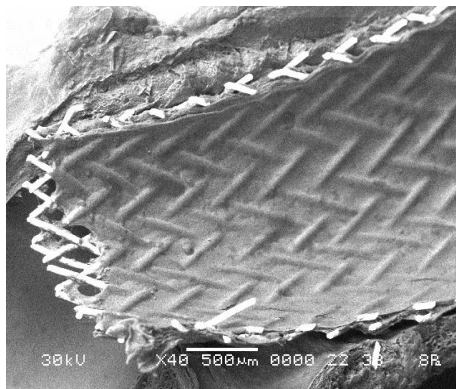
SCANNING ELECTRON MICROSCOPY

Edward A. Dauer, M.D.

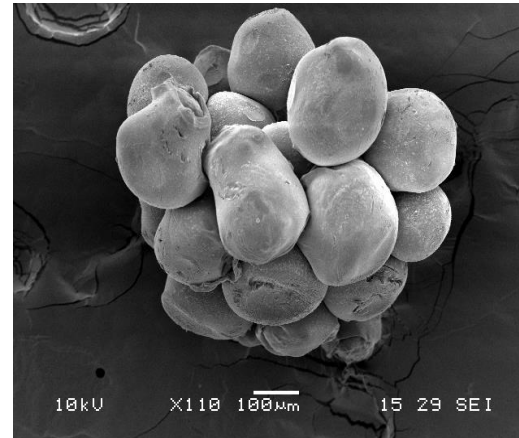
Our mission is to train students and researchers in the use of SEM for biomedical device design and analysis. The lab is collaborating in research with other departments of the College of Engineering



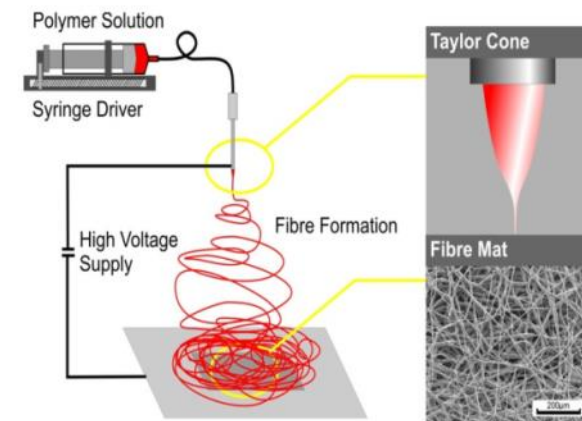
Polyurethane Tubes



Fibroblastic Proliferation
in a Vascular Stent



Manganese Oxide Microparticles



Hexafluoro-isopropanol
Scaffold Nanofibers